

GEBERIT INSTALLATION SYSTEMS

ALWAYS THE RIGHT SOLUTION

**KNOW
HOW**
INSTALLED

GEBERIT INSTALLATION SYSTEMS

ALWAYS THE RIGHT SOLUTION

**KNOW
HOW**
INSTALLED



HOW SANITARY FACILITIES **COME TO LIFE**

No restrictions during room design, quick installation at the building site, very little interfacing with other tradesmen and an optimal price-performance ratio. Customers and clients would expect nothing less when it comes to planning and implementing bathrooms and toilets. With Geberit installation systems, you have the right solution to meet every challenge.

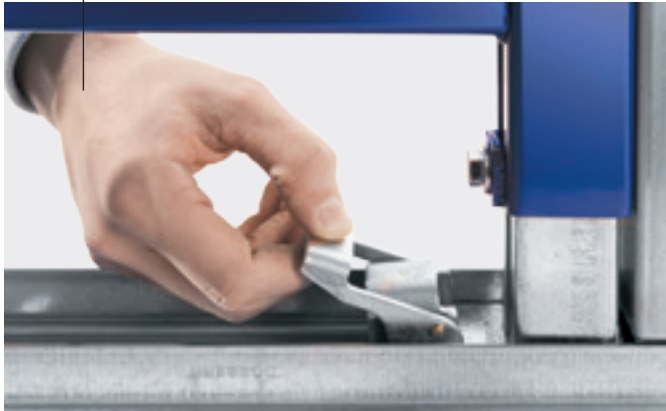
CONTENT

06 **GEBERIT CONCEALED CISTERN TECHNOLOGY**
On which you can rely.



22 **GEBERIT ONE**
The best of two worlds becomes one.

08 **THE RIGHT SYSTEM FOR EVERY SOLUTION**
Geberit Duofix, Geberit GIS and Geberit Kombifix.



26 **WIDE RANGE OF APPLICATIONS**
Innovative solutions for better bathrooms.

34 **MAINS CONNECTION TO THE WC**
The future starts today.



44 **PUBLIC SANITARY INSTALLATIONS**
Always on the safe side.

42 **THE GEBERIT DESIGN FAMILY**
To each their own.



50 **GEBERIT'S STRENGTHS**
Fire protection, sound insulation and planning software.

GEBERIT CONCEALED CISTERN TECHNOLOGY ON WHICH YOU CAN RELY

The launch of the WC cistern for in-wall installation paved the way over 50 years ago. Sanitary technology disappeared from the user's view and the bathroom became a room in which one could relax and feel comfortable.

Throughout the decades, Geberit has continuously created innovations which made behind-the-wall sanitary technology the current preferred solution for plumbing engineers and designers of sanitary facilities.



AN EVENTFUL HISTORY, CONSTANT INNOVATION

1964	1982	1993	1996	2008	2011	2014	2016	2017	2019
Geberit in-wall installation cistern – the birth of concealed cistern technology	Geberit Kombifix – the concealed cistern as a premounted installation element	Geberit GIS – a permanent prewall system in no time	Geberit Duofix – highest possible level of design flexibility for professionals	Geberit Sigma concealed cistern 12 cm – first concealed cistern that can be mounted tool-free	Geberit DuoFresh – the realisation of the integrated odour extraction unit	Geberit shower element with wall drain – the elegant solution for floor-even showers	Geberit urinal system – intelligent planning, installation and maintenance; water-saving operation	Geberit tap system – faultless installation of electronic wall-mounted taps	Geberit ONE offering pioneering, fully integrated and comprehensive solutions for the entire bathroom

FOR ALL CIRCUMSTANCES **GEBERIT DUOFIX**

→
Geberit Duofix element for wall-hung
WC, ready for installation and
equipped with cistern, conduit pipes
and electrical connection point for a
Geberit AquaClean shower toilet.

- Universal individual elements for drywall construction
- Can be enlarged for complete prewall and partition wall installation
- Maximum design freedom owing to the slim construction
- Optimal sound decoupling



With Geberit Duofix, the plumber and the sanitary engineer can choose from a comprehensive range of universal self-supporting installation elements. Together with the associated rails and studs, these elements can be used to create complete, statically load-bearing prewall and partition wall installations including tile-bearing panelling – and all this quickly and cleanly on site. These enable free placement of the various sanitary appliances. Room-height prewalls do not require anchoring on the back side.



You can find the control electronics, mixing valve and additional components of the Geberit Duofix element for an electronic wall-mounted tap in a separate function box where they are protected yet still easily accessible.

THE WHOLE RANGE OF GEBERIT DUOFIX

Whether it's a new construction or a renovation: the wide range of Geberit Duofix installation elements provides impressive solutions for both conventional and unusual construction situations. An overview.



CUSTOM SEAT HEIGHT

Height-adjustable Geberit Duofix element for wall-hung WC with Sigma concealed cistern, 12 cm, for age-appropriate living.
111.396.00.5



FLUSH ACTUATION AT THE TOP OR FRONT

Geberit Duofix element for wall-hung WC with Omega concealed cistern, 12 cm, in three installation heights.
111.030.00.1



FLOOR-EVEN SHOWER

Geberit Duofix element for shower with wall drain.
111.591.00.1



VANDAL-RESISTANT FLUSH CONTROL

Geberit Duofix element for urinals for hidden and vandal-resistant urinal flush control.
111.689.00.1



FOR WASHBASINS

Geberit Duofix element for washbasin and water meter section.
111.473.00.1



FOR BIDETS

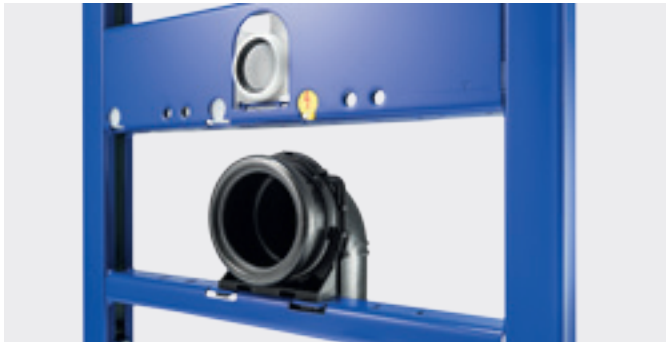
Geberit Duofix element for bidet.
111.510.00.1

GEBERIT DUOFIX

INSTALLATION TECHNOLOGY

TRIED AND TESTED

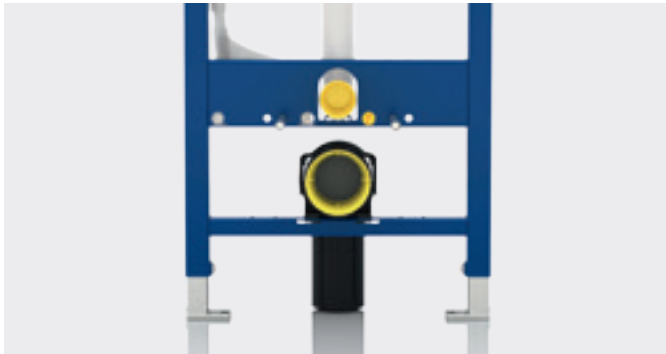
Geberit Duofix provides you with a variety of design possibilities – whether it's used as a single element or in a system. The advantages of the sophisticated installation technology with infinitely variable positioning options come into full effect for everyday operations on building sites.



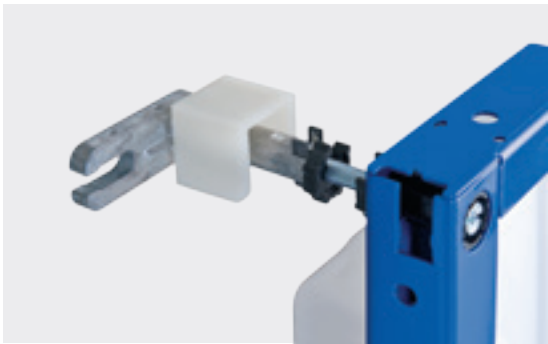
↑
Stepped setting of the outlet bend for the Geberit Duofix element for wall-hung WC.



↑
Simple, precise height adjustment using position-holding feet.



↑
Predetermined positions for water and mains connections.



↑
Comfortable depth adjustment from the front thanks to the installation kit for direct anchoring on the building.

All Geberit Duofix installation elements are prepared at the plant so that they can be installed quickly at the building site and connected with the required water supply and drainage. The work can easily be carried out by a single person. Self-cutting screws are used to fasten the element to a frame structure on a lightweight wall. Geberit provides an installation kit for direct anchoring on the building structure which you can use to comfortably set the depth adjustment from the front.

You can have a complete partition wall installation with tile-bearing panelling in an instant with the Geberit Duofix system rails for ceiling and floor as well as the room-height studs. You can easily fix the studs into the ceiling rail and pull them out from the bottom with a simple 90° turn. Thanks to the telescopic technology, you can do this without tools and without cutting to length. The studs are secured with a system rail clip in the system rail on the floor. A swivelling head also facilitates installation with roof pitches.



↑
Anchor Geberit Duofix system rails on the floor and ceiling. Attach the Geberit Duofix acoustic insulation tape and anchor the system rails in the floor and ceiling.



↑
Screw the Geberit Duofix studs into the ceiling rail and pull out the telescopic extension downward.



↑
Place the Geberit Duofix installation element in the correct position. For part-height prewalls, fasten with a wall anchor...

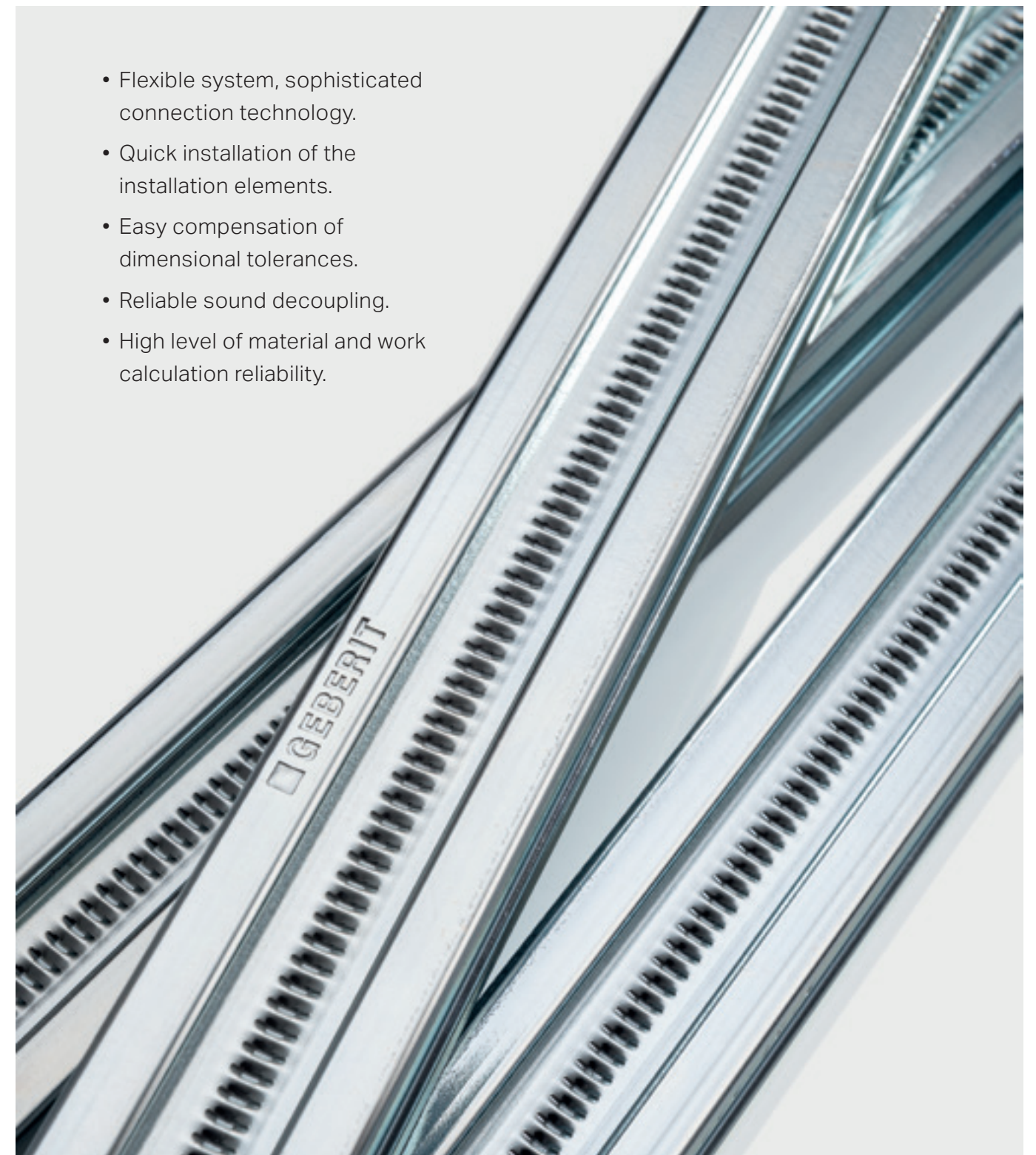


↑
... and then secure using Geberit Duofix system rail clips.

GEBERIT GIS QUICK AND FLEXIBLE

↑
With Geberit GIS, support systems, installation elements and panelling become complete, tile-bearing sanitary walls in just a few steps.

- Flexible system, sophisticated connection technology.
- Quick installation of the installation elements.
- Easy compensation of dimensional tolerances.
- Reliable sound decoupling.
- High level of material and work calculation reliability.



Geberit GIS provides the suitable connection for virtually any sanitary appliance and perfectly meets the challenges of barrier-free use. A single person can carry out the assembly and the final installation thanks to the sophisticated connection technology which has been tested in practical trials.

create the floor plan and front view as well as the material and parts lists – the best possible basis for reliable calculation.

The advantages of Geberit GIS can be seen right from the start: the planning software Geberit Pro-Planner supports plumbing companies while they

EVERYTHING UNDER CONTROL **WITH GEBERIT GIS**



↑
MOUNTING PLATE
For the concealed or exposed installation of taps and connections as well as support handles.
461.035.00.1



↑
VANDAL-RESISTANT FLUSH CONTROL
Geberit GIS element for urinals for hidden and vandal-resistant urinal flush control.
461.696.00.1



↑
FLOOR-EVEN SHOWER
Geberit GIS element for shower with wall drain for all conventional wall and floor constructions.
461.735.00.1



↑
FOR BIDETS
Geberit GIS element for bidet.
461.531.00.



↑
CORNER MODULE
Geberit GIS element for wall-hung WC with Sigma concealed cistern, 12 cm, for corner installation.
461.303.00.5



↑
FOR WASHBASINS
Geberit GIS element for wall-mounted tap and function box.
461.146.00.1



→
Geberit GIS profiles can be permanently joined with the Geberit GIS profile connectors extremely quickly and without tools.

GEBERIT GIS

A DIRECT PATH TO THE SANITARY WALL

Insert, align, press shut: Geberit GIS profiles can be permanently joined with the special profile connectors extremely quickly, thus creating a complete support system quickly and without tools out of just two components.

With a dovetail groove, the Geberit GIS profiles are optimally prepared for the installation of the elements. Geberit GIS profile connectors or Geberit GIS ratchet pins are used to securely fasten them to the prepared support system.

The Geberit GIS mounting brackets ensure that the sanitary wall is securely anchored to the building structure. Sound insulation bases made of cork ensure that the support system is effectively sound decoupled from the building.



↑
Up to four Geberit GIS profiles can be cut to length at the same time with the chop saw.



↑
Assembly of the Geberit GIS profiles: everything is fixed with a single click.



↑
The Geberit GIS mounting brackets with sound insulation bases made of cork ensure that the support system is securely anchored and reliably sound decoupled.



↑
The Geberit GIS installation elements can be fixed quickly and reliably.



↑
The Geberit GIS installation system is perfectly suitable for prefabrication at the workshop. Work on the building site can therefore be carried out much more efficiently.

GEBERIT KOMBIFIX

THE COMPLETE RANGE

FOR BATH AND WC

The Geberit Kombifix installation element range covers virtually every sanitary facility for bath and WC. Designed for use in solid construction, the ready-to-fit installation elements can be installed and connected to all connections quickly and securely.



↑
WC ELEMENT, STANDARD VERSION
Geberit Kombifix element for wall-hung WC with Sigma concealed cistern 12 cm.
110.300.00.5



↑
SLIM WC ELEMENT
Geberit Kombifix element for wall-hung WC with extra-slim Sigma concealed cistern 8 cm.
110.790.00.1



↑
FOR URINALS
Geberit Kombifix element for urinals, for hidden urinal control.
457.689.00.1



↑
FOR SHOWER DRAIN BEHIND THE WALL
Geberit Kombifix element for shower with wall drain.
457.534.00.1



↑
FOR WASHBASINS
Geberit Kombifix element for washbasin with deck-mounted taps.
457.430.00.1



↑
FOR BIDETS
Geberit Kombifix element for wall-hung bidets.
457.530.00.1



←
The tried-and-tested Geberit Kombifix installation elements are the perfect solution for masonry and concrete walls.

- Installation elements for use in solid construction.
- Delivered ready to install.
- Well-established across the world for over 30 years.

GEBERIT ONE

THE BEST OF TWO WORLDS BECOMES ONE



With Geberit ONE, we are combining the best of two worlds and offering pioneering, fully integrated and comprehensive solutions for the entire bathroom. Cleverly combined in a single system, Geberit ONE has the chance to demonstrate its many benefits – both obvious and hidden. This means better bathrooms for your customers.

THE BEST OF TWO WORLDS OFFERS SIMPLIFICATION

The planning and installation of diverse components – for which there were previously hardly any feasible solutions – are now greatly simplified thanks to Geberit ONE. Take for example the precise planning and installation of a wall-mounted tap or the integration of a niche storage box for the shower with factory-applied sealing foil. The Geberit ONE concept also incorporates the simplified planning and installation of a mirror cabinet that is simply inserted into the wall.

DESIGN AND FUNCTIONALITY IN FRONT OF THE WALL

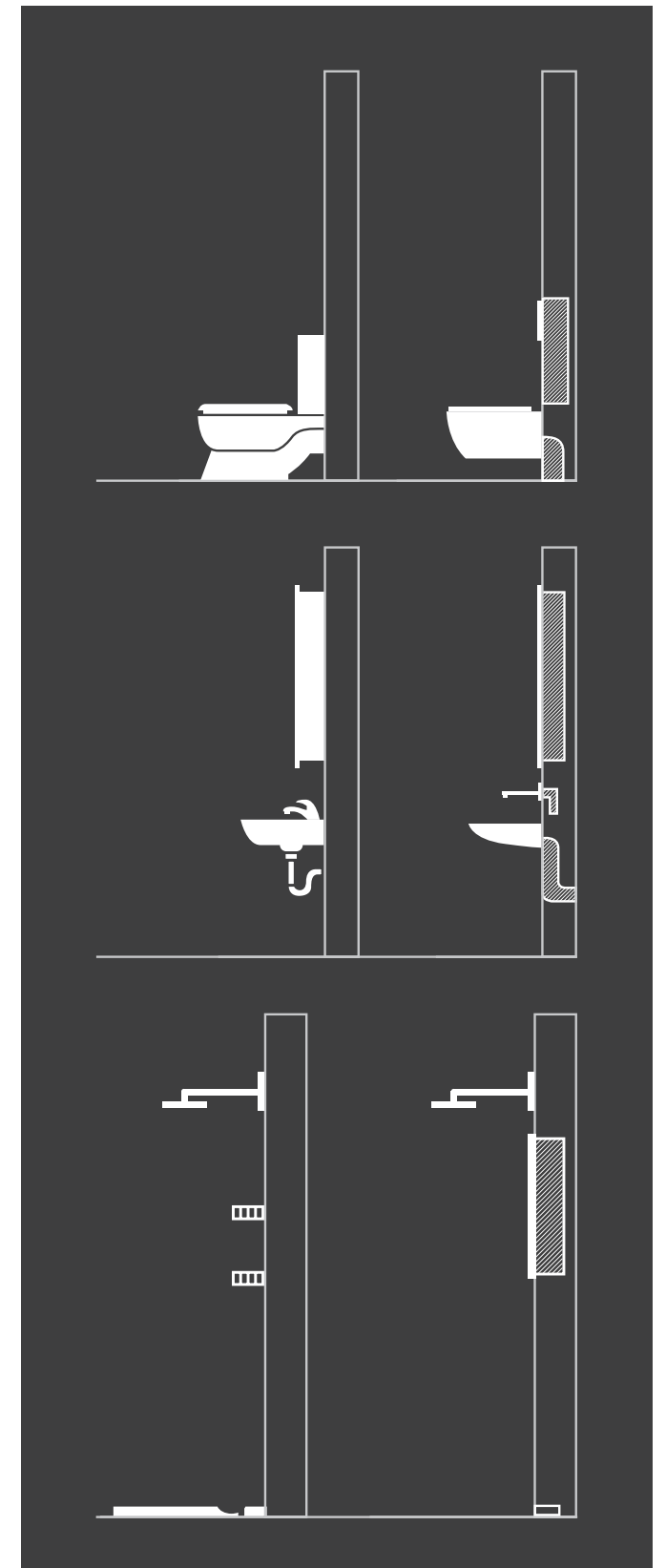
The purist look creates a new approach to life. Geberit ONE convinces in every respect with an elegant design and ensures reduced cleaning work across the entire bathroom thanks to its exceptional functions.

OPTIMAL USE OF SPACE

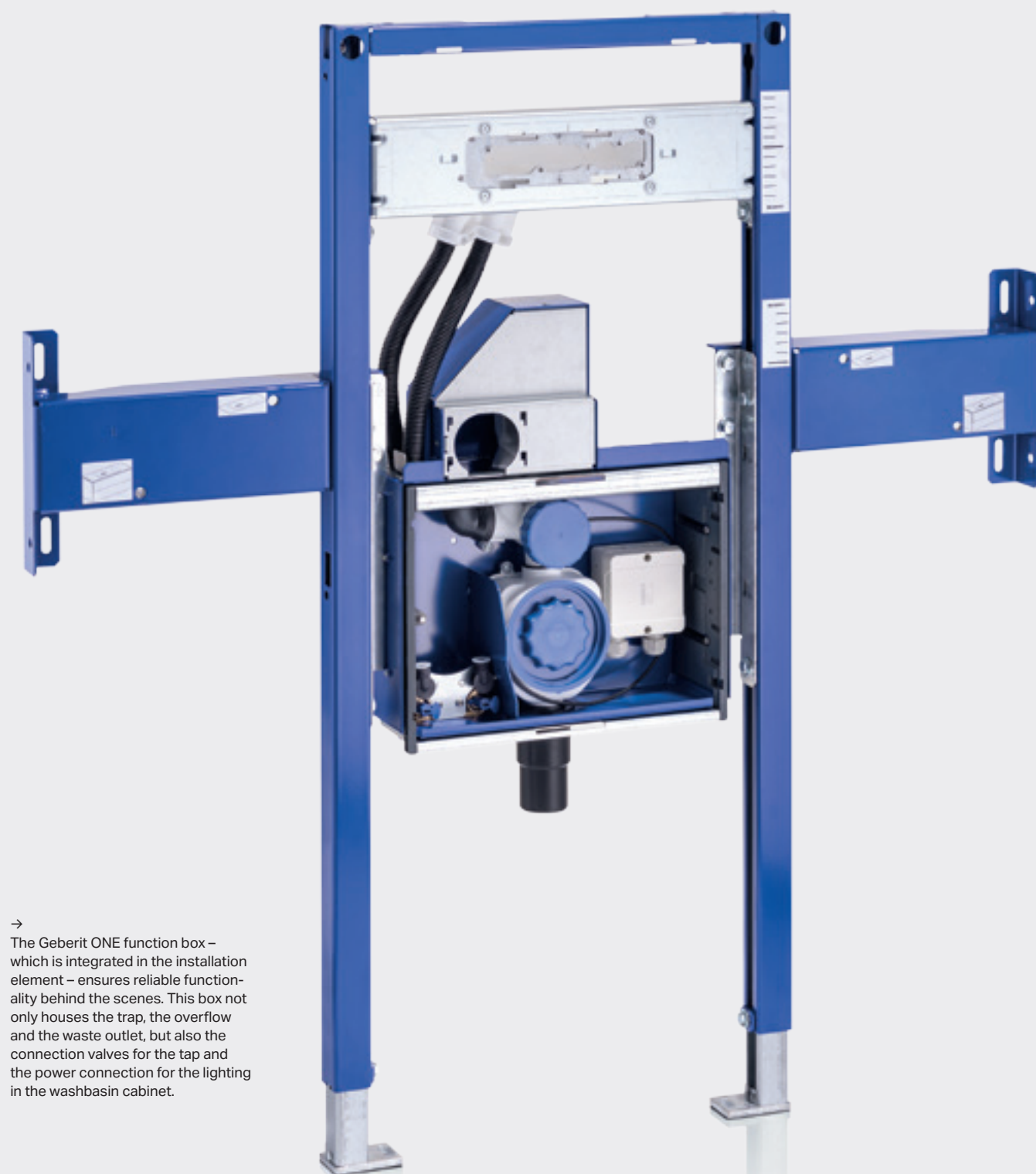
Geberit ONE cleverly combines know-how behind the wall with design expertise in front of the wall. The prewall is used to an even greater extent for housing the sanitary technology and as additional storage space. This means we can effectively create more space and a new experience in the bathroom.

Because the prewall is used for housing the sanitary technology and as storage space, the toilet, washbasin and shower maintain a sense of elegant understatement. By shifting the technical components behind the wall, plumbers can better manage the links to other trades – such as drywall builders, tilers and electricians – while users also benefit from the added space.

↓



* The shower partition wall shown above will be included in our product range from October 2019 and will be offered for sale from then on. It is not possible to order or pre-order the article beforehand.



→ The Geberit ONE function box – which is integrated in the installation element – ensures reliable functionality behind the scenes. This box not only houses the trap, the overflow and the waste outlet, but also the connection valves for the tap and the power connection for the lighting in the washbasin cabinet.

GEBERIT ONE **PROVEN KNOW-HOW** BEHIND THE WALL

Over the years, the installation systems from Geberit have become established among professionals, who appreciate their perfect functionality, simplicity and outstanding quality. Geberit ONE enhances how the prewall is used with additional elements and a continuous connection to the system. However, no time is wasted having to learn something new.



↑ The Geberit ONE WC fits with the proven Geberit Duofix and Geberit GIS installation elements for WCs, but can also be combined with installation technology from other manufacturers.



↑ The new installation element is set up for the simple, precise and safe installation of the Geberit ONE wall-mounted taps and washbasin ceramic appliances.



↑ Thanks to the installation set, the niche storage box becomes an integral part of the shower area. The space required for the shower area can then be planned reliably and already determined during the installation phase.



↑ The Geberit niche storage box is equipped with a pre-mounted sealing foil for integration in the composite seal and is thus an integral part of the installation system.



↑ The newly developed angle gear with optimised force transmission enables quick and easy installation.



↑ The height of the Geberit ONE WC can be adjusted without needing to open up the prewall – not only during installation but also years afterwards.

WIDE RANGE OF APPLICATIONS INNOVATIONS FOR BETTER BATH- ROOMS

Innovative sanitary technology which performs reliably either behind or in front of the wall, and provides versatile possibilities for clever room design and optimal use of space. Geberit installation systems and Geberit Monolith sanitary modules perfectly fulfil the prerequisites to allow a professional to meet all the presented challenges.



↑

The Geberit installation systems form the basis which allows the effect of the creative elements to unfold in the bathroom.

COMPLETE FLEXIBILITY

The world's sanitary facilities are luckily very diverse. Every construction task has its own distinctions, every customer has their own requirements and every time period has its own trends and vogues. Geberit meets this diversity with complete flexibility in its installation systems. This flexibility comes into effect when the barrier-free use is suddenly required or when spatial circumstances require improvisation. In the following pages, you will see just how diverse the system solutions are.

VISUAL APPEAL IS NOT ENOUGH

Real beauty is not only visible, but also palpable, if not always straight away. When it comes to Geberit products, there is always functional added value behind every flawless design. This added value becomes apparent during the installation, when service and maintenance is needed, and of course, during use. Urinals, taps and the floor-even shower: evidence of the indispensable added benefits can be found everywhere – this proof is summarised on the following pages.

→

What can you expect from Geberit? An elegant design which conceals the functional added value.

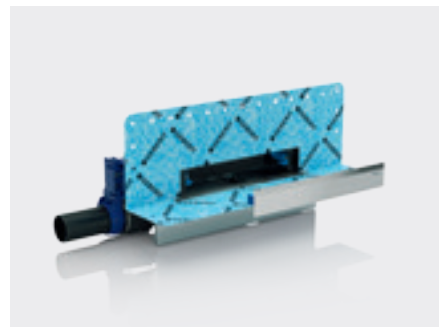


WIDE RANGE OF APPLICATIONS

A CLEAN AFFAIR

FLOOR-EVEN SHOWER

GEBERIT WALL DRAIN FOR SHOWERS



↑
The Geberit GIS and Geberit Duofix installation elements significantly reduce the amount of work required and also guarantee a tight, long-lasting connection.



↑
Thanks to the low water seal depth, the Geberit wall drain for showers is also particularly suitable for situations with a low screed height.



↑
A slight slope can be created in the floor by installing an additional collector profile. This significantly simplifies interfacing with the tiler.



↑
The integrated comb insert can be easily removed for cleaning.



COLOURS/PRODUCT MATERIALS



Bright chrome-plated



White alpine



Stainless steel brushed



Stainless steel polished



Tiled according to preference



You can exploit the full potential of floor-even bathrooms by laying the water outlet behind the wall. This type of installation has proven its worth for bathroom renovations as well as for new buildings – long before the visual benefits come to light.
→

- Closed, visually attractive floor surface
- Easy connection to the available discharge pipes
- Simplified interfacing with the tiler
- Practical cleaning

WOW-EFFECT INCLUDED

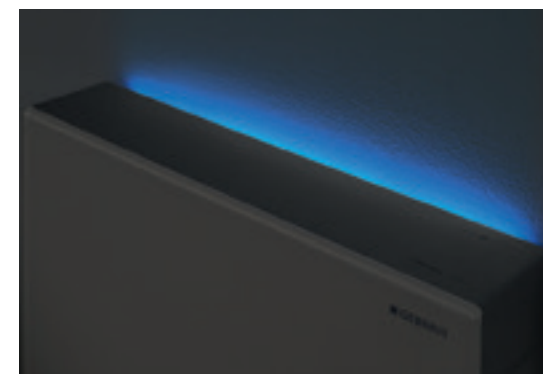
GEBERIT MONOLITH SANITARY MODULE

The Geberit Monolith sanitary module for WC is compatible with most standard WC ceramic appliances as well as with the Geberit AquaClean shower toilets. It is equally suitable for new building projects and renovations.



Thanks to its timeless design and versatile positioning options, the Geberit Monolith sanitary module for WC is a first-rate alternative to an exposed cistern. With its water-saving dual flush and first-class materials, even the basic model meets high demands. In addition, with integrated odour extraction, subtle orientation light and intelligent sensor technology, the Geberit Monolith Plus model offers the ultimate in user comfort. The fact that the supporting frame is designed similarly to the tested Geberit Duofix installation element is particularly useful for the plumber – the Geberit Monolith can therefore be anchored to the building by following a familiar procedure.

- Front cover made of safety glass with a high load bearing capacity (ESG)
- Side cladding made of elegant brushed aluminium
- Very slim with a depth of only 10.5 cm
- Suitable for new construction and renovation
- The installation is carried out according to the Geberit Duofix installation system mounting model.



2013

WIDE RANGE OF APPLICATIONS

FLEXIBILITY INCLUDED

BARRIER-FREE & SPACE SAVING

Regardless of whether you are facing a tricky construction situation or if age is taking its toll, there's no reason to forego your usual comfort. With the Geberit GIS and Geberit Duofix installation systems, you can set up bathrooms which will delight users in the long term even on small surfaces.

Geberit has developed special WC installation elements for installation under window parapets or a height-adjustable WC. The latter of which allows a subsequent adjustment of the seat height to up to 49 cm. Furthermore, support handles can also be subsequently professionally installed on both sides of the WC using mounting plates.



↑
Geberit Duofix element for wall-hung WC, 82 cm, with Omega concealed cistern.



↑
Geberit Duofix element for height-adjustable wall-hung WC.



↑
Mounting plates for the installation of support handles.



↑
You can install a space-saving Geberit Omega concealed cistern in front of a window parapet. It is available in three installation heights and can be connected to the water supply at the back or at the side. You can choose to have the small, elegant actuator plates on the top or at the front for the flush actuation.

NEW

GEBERIT INTEGRATED SANITARY FLUSH

PROGRESS NOT STAGNATION

The Geberit sanitary flush integrated in the concealed cistern ensures drinking water hygiene without the need for additional space requirements. It's an ideal solution if the required installation location already has a WC. The sanitary flush is available for the Geberit GIS and Duofix installation systems in any constructional situation.

SAVE WATER

Temperature and volumetric flow rate sensors ensure that only the quantity of water actually required is drained. This makes it possible to achieve a good balance between ensuring drinking water safety and saving water.

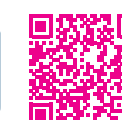
AVAILABLE IN 12 MODELS

The integrated sanitary flush is available for the Geberit GIS and Duofix installation systems. It comes in versions with one water supply connection or two. What's more, the option is also available to choose between an entry-level version that operates without sensor technology, a version that is prepared for additional sensor technology, and a version that is already equipped with internal sensor technology. The volumetric flow rate sensor allows the flush volume to be recorded precisely.

ACTUATOR PLATES

The cistern can be combined with all mechanical actuator plates in the Geberit Sigma01, 10, 20, 21, 30 and 50 series, as well as with all WC ceramic appliances.

- Smart integration into the concealed cistern without additional sanitary appliances
- Compact design without additional service openings
- Various flushing programmes for optimal adjustment
- User-friendly control and programming using the smartphone app
- Easily accessible via the actuator plate
- Flexibly adjustable flush performance up to 2x 4 l/min
- Intelligent sensor technology for temperature control
- Integrated backpressure sensor for safety
- Impervious to escaping steam or condensation
- Log function for relevant measured values and parameters



GEBERIT SETAPP

The app for setting the Geberit sanitary flush on a tablet or smartphone can be downloaded here for free. It is also available in the App Store and from Google Play.

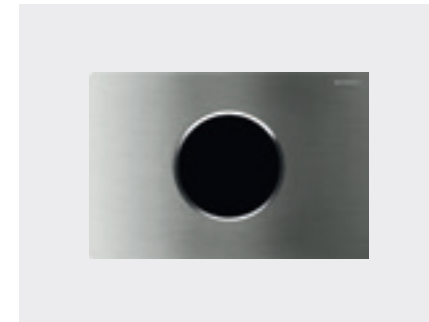
The Geberit Duofix element for wall-hung WC is perfectly prepared for current and future demands on comfort thanks to conduit pipes for the water supply connection and the pre-marked position for a covered mains connection.
↓

- Touchless flush actuation
- Integrated odour extraction unit
- User recognition, actuator button illumination
- Shower toilet

MAINS AND WATER SUPPLY CONNECTIONS IN THE WC AREA

THE FUTURE STARTS TODAY

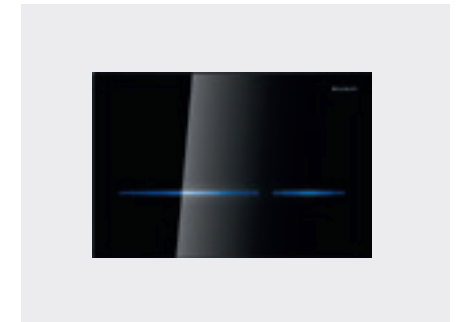
Geberit installation elements for wall-hung WCs have connection positions for electricity and water. This means that your comfort wishes can be effortlessly fulfilled even years down the line – for example, in the form of a shower toilet.



↑
The control electronics of a touchless Geberit actuator plate Sigma10 with water-saving dual flush is energised via a mains connection or batteries.



↑
The Geberit DuoFresh module extracts the air directly from the WC ceramic appliance and purifies it with a ceramic honeycomb filter. A proximity sensor detects when someone approaches the WC, automatically activating odour extraction and a discreet orientation light.



↑
The high-quality Geberit Sigma80 actuator plate is made of glass, features user recognition and activates the actuator button illumination upon approach. You can individually programme the flush characteristics, the colour of the LED light bars and much more.



↑
The Geberit AquaClean shower toilets combine an attractive aesthetic with refined comfort functions, whether you'd prefer a WC enhancement solution or a complete solution (Mera model pictured).



GEBERIT DUOFRESH MODULE FRESH AIRFOR EVERYONE

↑
As long as there is a mains connection, the Geberit DuoFresh module can be retrofitted in most Geberit concealed cisterns that were installed within the last 10 years.

The Geberit DuoFresh module extracts unpleasant odours directly from the WC ceramic appliance. The extraction unit that accompanies it, the ceramic honeycomb filter, an insert for Geberit DuoFresh sticks and an orientation light can be found in an easily accessible location behind the actuator plate.

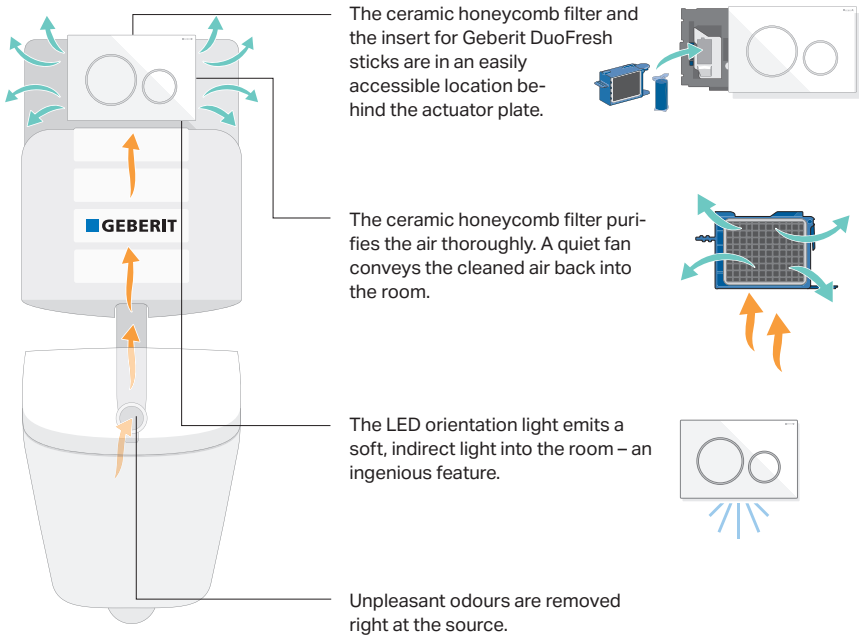
HYGIENE OPTIONS THAT CAN ALSO BE RETROFITTED

The Geberit DuoFresh module can be integrated or retrofitted behind almost every Geberit actuator plate from the Sigma range. A sophisticated swivelling mechanism enables the plate to be moved conveniently to one side, allowing the plumber and the end user to access the hygiene options with ease. Additives that colour the flush water blue and give

off a pleasant scent are popular with many end users. Geberit has therefore integrated an insert for in-cistern sticks alongside the odour extraction and orientation light comfort functions. The insert is located directly behind the actuator plate, making it extremely easy to replenish the cistern with new Geberit DuoFresh sticks. The installation kit includes the swivelling mechanism needed to move the actuator plate.

ODOUR EXTRACTION UNIT WITH ORIENTATION LIGHT

The Geberit DuoFresh module removes unpleasant odours directly from the WC ceramic appliance – extracting the air through the flush pipe and flush valve, purifying it using a ceramic honeycomb filter and then introducing the cleaned air back into the room. The module also features an LED orientation light which produces a soft glow during night-time visits to the toilet. The air extraction and light are controlled by a proximity sensor system. The installation kit for the odour extraction unit includes an insert for Geberit DuoFresh sticks and a swivelling mechanism for moving the actuator plate. The transformer for the power supply must be ordered separately.



INSERT FOR GEBERIT DUOFRESH STICKS HYGIENIC FRESHNESSFOR WEEKS

Geberit offers the insert for Geberit DuoFresh sticks separately – without the odour extraction unit and light – so Geberit DuoFresh sticks can be used even without the electrically operated comfort functions. Available separately, the insert is suitable for most Geberit actuator plates in the Sigma range, does not need a mains connection and can even be retrofitted. It guides the Geberit DuoFresh stick to a fixed position below the surface of the water in the cistern, where the stick dissolves slowly and ensures a pleasant scent emanates from the entire WC ceramic appliance with every flush.

1 It doesn't get any simpler than this: Move the actuator plate to one side. 2 Place the Geberit DuoFresh stick in the insert behind the plate. 3 Close the plate and enjoy the freshness with every flush. 4 Geberit DuoFresh sticks turn the flush water slightly blue and give off a pleasantly fresh scent.



GEBERIT DESIGN FAMILY
 TO EACH THEIR OWN
 ACTUATOR PLATES WITH
 STYLE

The actuator plate is one of the most important elements of bathroom design, along with the taps, WC ceramic appliances, as well as wall and floor surfaces. Geberit provides you with the sought-after diversity through its large selection of shapes, colours and models.

The Geberit actuator plates of the Omega series are setting a new standard. With external dimensions of only 184 mm x 114 mm, the surface-even Geberit actuator plate Omega60 requires very little space and provides the plumber with easy access to the service opening of the Geberit Omega concealed cistern. The plates can be attached at the service openings on the front or at the top.

With the Geberit actuator plates of the Sigma series, Geberit offers an exceptionally wide range of design possibilities and functions. Whether you're after dual or stop-and-go flush, manual or touchless operation, an integrated odour extraction unit or surface-even installation – you can find a stunning solution for every requirement in the Geberit actuator plate Sigma series.



GEBERIT FLUSHING SYSTEM SIGMA

- Geberit Sigma concealed cistern, minimum construction height 110 cm.
- (Pre)wall thickness at least 12 cm (shell of a building, without taking the drainage pipes into consideration).
- Front actuation.
- Guaranteed availability of functional spare parts for 25 years.

GEBERIT FLUSHING SYSTEM OMEGA

- Geberit Omega concealed cistern, minimum construction height is only 82 cm.
- (Pre)wall thickness at least 12 cm (shell of a building, without taking the drainage pipes into consideration) for front actuation.
- Front or top actuation.
- Guaranteed availability of functional spare parts for 25 years.

		GEBERIT OMEGA Geberit actuator plates for toilet flush actuation	GEBERIT SIGMA Geberit actuator plates for toilet flush actuation	Geberit cover plates for urinal flush actuation
	30	<ul style="list-style-type: none"> • Dimensions: 212 x 142 mm 	<ul style="list-style-type: none"> *** • Dimensions: 264 x 164 mm 	<ul style="list-style-type: none"> • Pneumatic • Electronic • Dimensions: 130 x 130 mm
	50		<ul style="list-style-type: none"> *** • Dimensions: 246 x 164 mm 	<ul style="list-style-type: none"> • Pneumatic • Electronic • Dimensions: 130 x 130 mm
	60	<ul style="list-style-type: none"> • Surface-even installation • Dimensions: 184 x 114 mm 	<ul style="list-style-type: none"> • Surface-even installation • Dimensions: 221 x 139 mm 	<ul style="list-style-type: none"> * • Electronic • Dimensions: 130 x 130 mm
	70		<ul style="list-style-type: none"> • Servo support • Dimensions: 240 x 158 mm 	<ul style="list-style-type: none"> * • Electronic • Dimensions: 130 x 130 mm
	01		<ul style="list-style-type: none"> *** • Dimensions: 246 x 164 mm 	<ul style="list-style-type: none"> • Pneumatic • Electronic • Dimensions: 130 x 130 mm
	10		<ul style="list-style-type: none"> *** • Dimensions: 246 x 164 mm** 	<ul style="list-style-type: none"> • Pneumatic • Electronic • Dimensions: 130 x 130 mm
	20	<ul style="list-style-type: none"> • Dimensions: 212 x 142 mm 	<ul style="list-style-type: none"> *** • Dimensions: 246 x 164 mm 	<ul style="list-style-type: none"> * • Pneumatic • Electronic • Dimensions: 130 x 130 mm
	21		<ul style="list-style-type: none"> *** • Dimensions: 264 x 164 mm 	<ul style="list-style-type: none"> * • Pneumatic • Electronic • Dimensions: 130 x 130 mm
	10		<ul style="list-style-type: none"> • Touchless operation • Dimensions: 246 x 164 mm 	<ul style="list-style-type: none"> • Electronic • Dimensions: 130 x 130 mm
	80		<ul style="list-style-type: none"> • Touchless operation • Dimensions: 247 x 164 mm 	<ul style="list-style-type: none"> * • Electronic • Dimensions: 130 x 130 mm

* Our recommended design, which visually matches the product family
 ** Stop-and-go flush
 *** Suitable for use with optional Geberit DuoFresh module, which boasts odour extraction, an orientation light and an insert for Geberit DuoFresh sticks

PUBLIC SANITARY INSTALLATIONS

FLEXIBLE URINAL SYSTEM WHAT MORE COULD YOU WANT?



↑
The flexible Geberit urinal system provides an easy way to meet the complex requirements of public and semi-public urinal systems.

Based on its tried-and-tested concealed Duofix and GIS installation systems, Geberit has developed a comprehensive solution which can be used to meet the complex requirements of public and semi-public urinal systems. The individual components of the Geberit urinal system are carefully matched to one another, ensuring smooth installation and maximum efficiency once it is fully operational.

• **Unparalleled flexibility:** The system offers a concealed urinal flush control, a docking station integrated beneath the WC ceramic appliance, or completely waterless operation, depending on the customer's requirements and what is suitable for the structural conditions.

• **Exemplary efficiency:** Optimum flush performance is achieved with as little as 0.5 litres of water.

• **Scrupulous hygiene:** The rimless Preda and Selva urinal ceramic appliances reduce the amount of cleaning needed and prevent unpleasant odours.

• **Freedom of choice:** The control unit works with a mains connection, a battery or a self-sustaining power supply. Retrofitting is also possible.

• **Universal design:** The Preda and Selva urinal ceramic appliances and their associated partition walls fit neatly into every environment.

The Geberit urinal system is a decidedly economical solution that makes planning, installing and maintaining urinal systems considerably simpler.



↑
The practical docking station provides a convenient way of accessing the control unit at any time.



↑
The trap can be easily accessed from above, so the urinal ceramic appliance does not need to be removed for maintenance or cleaning purposes.



↑
Geberit Duofix element for urinal with visible urinal flush control.



↑
Geberit GIS element for urinal with hidden and vandal-resistant urinal flush control.

GEBERIT DRINKING WATER HYGIENE

SAFE DRINKING WATER

Many consumers are not aware of the fact that dangerous pathogens such as legionella lurk precisely where they expect nothing but freshness and cleanliness. With the right solutions, Geberit is able to ensure that plumbers, sanitary engineers and real estate operators can maintain drinking water quality with the appropriate measures.



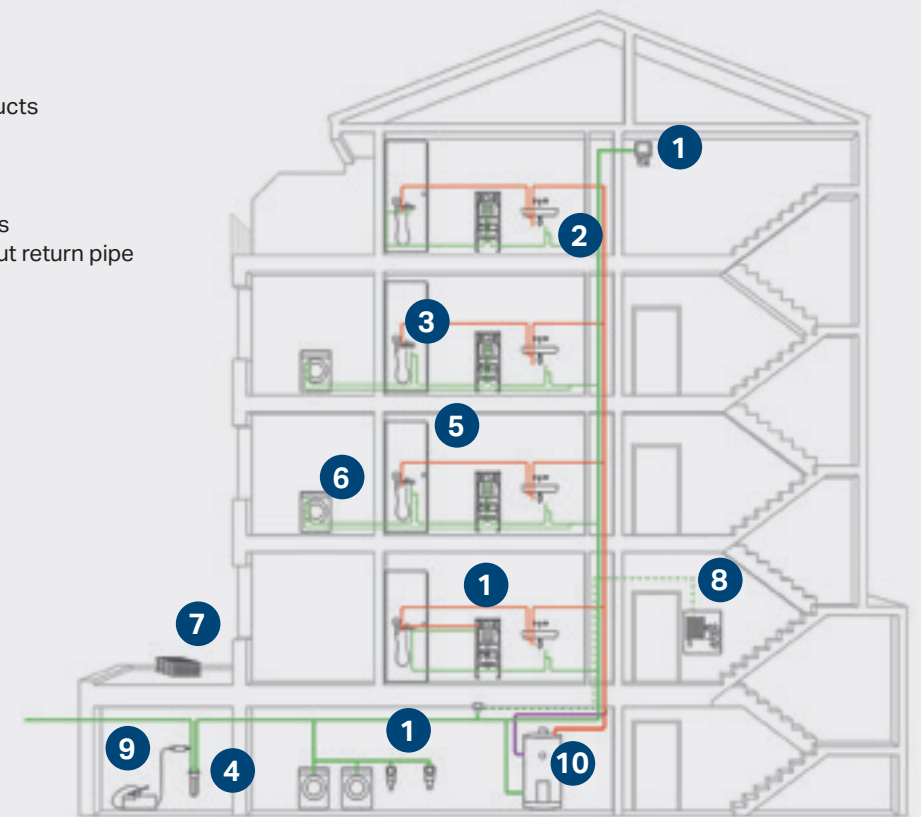
NEW

← **GEBERIT INTEGRATED
SANITARY FLUSH
IN THE CISTERN**
Space-saving solution if a WC
is available.

Restrict the growth of harmful germs and bacteria with Geberit's know-how:

- Taking care of correct planning, design and commissioning
- Ensuring correct operation
- Preventing stagnation
- Avoiding unfavourable temperatures

- 1 Regular flushing
- 2 No lukewarm water
- 3 Tested construction products
- 4 Regular maintenance
- 5 Dimensioning
- 6 No unused pipes
- 7 Clean system components
- 8 Extinguishing water without return pipe
- 9 Clean start
- 10 Using heat against germs

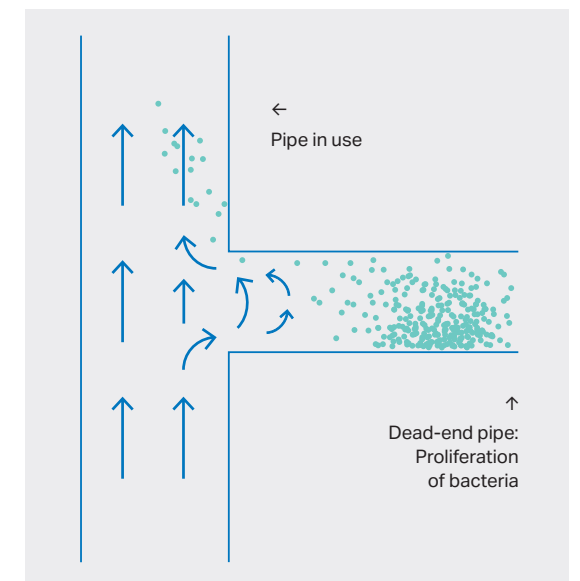


DRINKING WATER SAFETY STARTS WITH THE PLANNING

When it comes to ensuring that showering remains a carefree pleasure without health hazards, responsibility lies with the sanitary engineer, craftsman and operator of the drinking water system. There's no such thing as germ-free drinking water, but a health-threatening concentration can only occur if the pathogens find favourable conditions. Geberit supports sanitary engineers and plumbers with planning software and technical solutions. These include systems for hygienically safe initial filling of the drinking water system as well as pipes and fittings that are protected against dirt and contamination by sealing caps until they are ready for installation. Geberit sanitary flushes also offer the possibility of ensuring perfect drinking water hygiene through the regular replacement of stagnant water.

STANDARDS AND LAWS: GUIDELINES FOR SAFETY

Guaranteeing hygienically safe drinking water quality in domestic installations is the subject of various ordinances, standards and regulations. At a European level, Directive 98/83/EC governs the quality of water for human consumption. Every country has its own additional ordinances on the quality of water intended for human consumption, such as the Trink-WV in Germany, the TWV in Austria, and the TBDV in Switzerland. Geberit products and systems all fulfil the requirements of international standards. If the ordinance requirements and the generally acknowledged rules of technology are observed, then the key prerequisites for a hygienic drinking water supply are in effect. Sanitary engineers, plumbers and operators are then also on legally secure ground.



↑ **CAUTION: STAGNANT WATER**
Dead-end pipes in which no water replacement takes place encourage the growth of bacteria.

GEBERIT FIRE PROTECTION

DESIGNED FOR SAFETY



↑ Various installation variants are tested in extensive fire protection tests to test how long they can withstand the spreading fire.

Fire protection is only as effective as the weakest link in the chain of measures. If you combine elements from different manufacturers, you risk making dangerous interface comprises, which also makes it more difficult to meet the relevant standards and regulations. This is why Geberit has developed complete system solutions which ensure there is a demonstrably high level of fire safety.

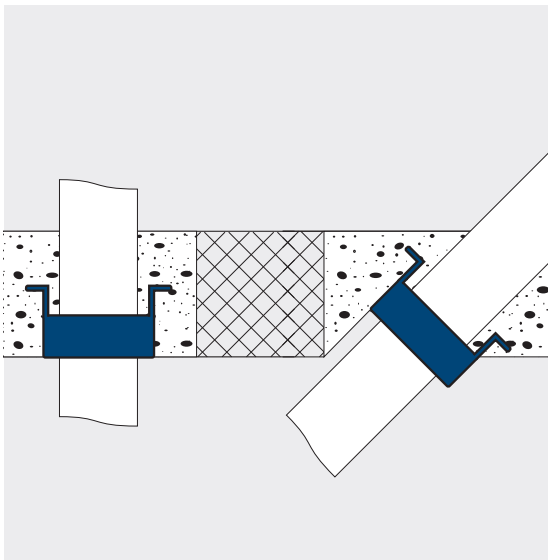


↑ The fire protection sleeve contains an intumescent material which inflates at temperatures of around 150 °C. This inflatable material closes off the feed-through in the ceiling or behind the wall before the fire and smoke can make their way into other rooms or floors.

Wall and ceiling openings as well as installation ducts can make it easier for fires in buildings to spread if they are not sealed in a proper, standard-compliant way. Geberit fire protection sleeves seal the pipe openings in case of a fire and prevent smoke, fire and heat spreading to other rooms or parts of the building.



↑ Professional installation of a discharge pipe in an oblique ceiling opening. A fire protection sleeve is located between the pipe and the concrete.



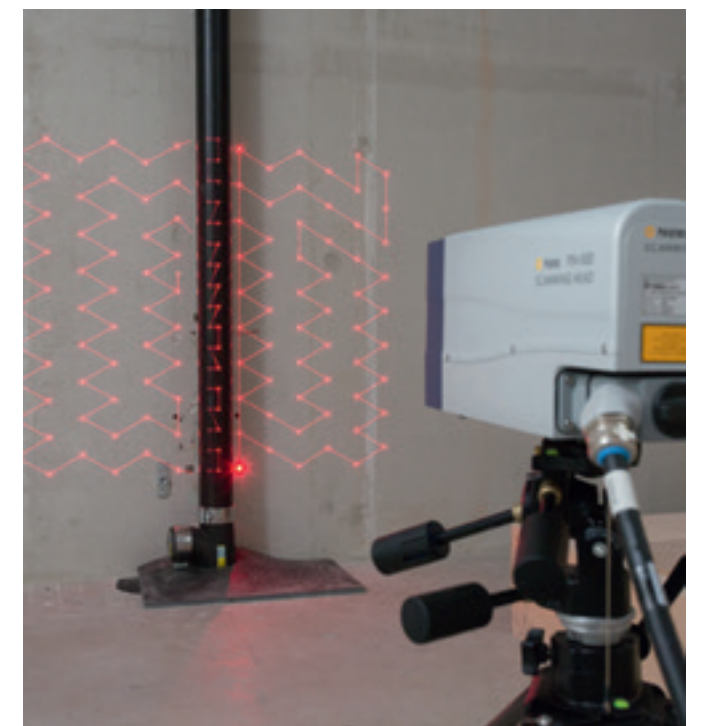
↑ Installation flush with the ceiling (left) and oblique installation of a Geberit fire protection sleeve.

GEBERIT SOUND INSULATION

QUIET LEADS TO A GOOD QUALITY OF LIFE

The installation systems from Geberit comprise solutions for sound insulation which have proven reliable time after time. They meet current standards and regulations and they guarantee that you and your customers can rest easy.

You can significantly reduce sound emissions such as those caused by discharge pipes or toilet flushes by selecting the right systems and appliances and having them professionally installed. The sounds cannot, however, be completely eliminated. As a result, Geberit places great importance on reducing sound transmissions. With the aid of suitable installation technology, appliances, water supply lines and discharge pipes can be decoupled from the building structure so well that the sanitary noises are only transferred throughout the building on a strongly reduced scale.



↑
Sound insulation is one of Geberit's core areas of expertise. The products are put through their paces using state-of-the-art measurement technology in the company's own Building Technology and Acoustics Laboratory, both on their own and within systems.

↑
Sophisticated fastening and insulation technologies ensure that the development of noise and sound transmission are kept to a minimum.

BREAKING THROUGH OBSTACLES IN SANITARY PLANNING

NEW

With the content for Geberit GIS elements and Geberit Kombifix elements.

GEBERIT BIM CATALOGUE PLUG-IN FOR AUTODESK® REVIT®

The Geberit BIM Catalogue Plug-in for Autodesk® Revit® can be downloaded free of charge. Once the plug-in is installed in Autodesk® Revit®, sanitary engineers can access the BIM content for Geberit products directly.

Here's how it works:

1. Download the plug-in from the Geberit website: www.geberit.xy/BIM
2. Log in and install the plug-in

Throughout the entire life cycle of a building, processes need to be kept consistent and information needs to flow smoothly in order to make planning more reliable and keep construction efficient. More and more projects are being developed on the basis of BIM (Building Information Modelling) for this reason.

That's the theory, at least; however, things often work quite differently in practice. Manufacturer data might be incomplete, obsolete or even incorrect, and hardware or software systems can be pushed to their limits all too soon due to excessively large volumes of data – particularly in major projects. This is one of the biggest obstacles faced by digital planning. In many cases, users also have to manually amend and improve BIM objects to ensure that they will actually function in the planning process.

This is where the Geberit BIM Catalogue Plug-in comes into play.

DIRECT ACCESS TO BIM CONTENT

With the Geberit BIM Catalogue Plug-in for Autodesk® Revit®, sanitary engineers are given direct access to BIM content for Geberit piping and installation systems*. Using a plug-in that they install in Autodesk® Revit®, they are presented with a practical product catalogue from which they can download BIM models directly to the project as required. This removes the need to search laboriously for individual BIM models on different platforms.

EFFICIENT PLANNING WITH MANAGEABLE MODELS

Geberit relies on highly simplified, parametric geometries with all the meta information that is relevant for planning in the background. This avoids overloading CAD systems from the outset and allows for efficient planning.

Installation elements are also structured on the basis of parameters as far as possible, providing huge added value in the planning process: all settings possible on the installation element can also be visualised in the planning. Among other things, the frame height or connection bend angle can be adjusted in the properties. The connection width of the fastening screws can also be adjusted in order to use as many ceramic models as possible during planning.

RELIABLE PLANNING WITH CURRENT DATA

The direct connection to the Geberit product information system ensures that the user only uploads tested and approved BIM objects. Incorrect or obsolete BIM content is no longer a problem.

MANUFACTURER-NEUTRAL TENDERS

As a rule, public tenders in the EU must be manufacturer-neutral. Geberit has a simple solution for this: with just a single click, the manufacturer-specific and model-specific data in the built-in parameters are set to "manufacturer-neutral" and replaced by generic designations.

After the tender has been issued, the manufacturer-specific parameters can be restored with just another click. This function does away with the painstaking task of replacing objects in the BIM model and significantly reduces the amount of work required.

LOCAL PRODUCT CATALOGUE

Selecting a country or region ensures that only those products that are available in the pre-selected country or respective region are included during planning.

BIM CONTENT IN THE NATIONAL LANGUAGE

In addition to the region, the national language can be set so that the BIM models are automatically translated into it.

WORLDWIDE PLANNING APPLICATIONS

Thanks to region and language options, the Geberit BIM Catalogue can be used around the world.

Planning with BIM really is this simple!

* This will be extended to additional product groups in the future.

Geberit International AG
Schachenstrasse 77
8645 Jona

F 41 55 221 63 00
T 41 55 212 42 69
sales.ch@geberit.XY

www.geberit.xx

GEBERIT PROPLANNER

YOUR SUCCESS OUR PROGRAMME

Cost estimates, specifications of service, and offers – creating them costs time and money. The competitive situation forces every company to create plans both quickly and simply, but with the highest level of precision and reliability.

Geberit ProPlanner is tailored to the needs of plumbers and sanitation companies who take care of the planning and calculation for medium to large projects themselves. The software package comprises a module for supply, drainage and syphonic roof drainage systems, as well as a module for the installation systems.

Geberit ProPlanner features a comprehensive display as well as intuitive operation. Furthermore, regular updates ensure that the software always takes into account the currently valid standards and regulations, as well as Geberit innovations. Once created, the planning results can be exported for further editing thanks to various interfaces. Geberit supplies the planning software free of charge.

- Fast, simple and efficient planning
- Intuitive operation (Windows® technology)
- Kept up to date with current standards and regulations
- Automatic output of product material, parts, offer and cut lists, as well as floor plan, front view and installation drawings
- Export function for detailed planning 3D module
- CAD export interface (Autodesk® RealDWG®)

With a few clicks of the mouse, a fully dimensioned and calculated plan or the full specifications of service are created in the format desired.

